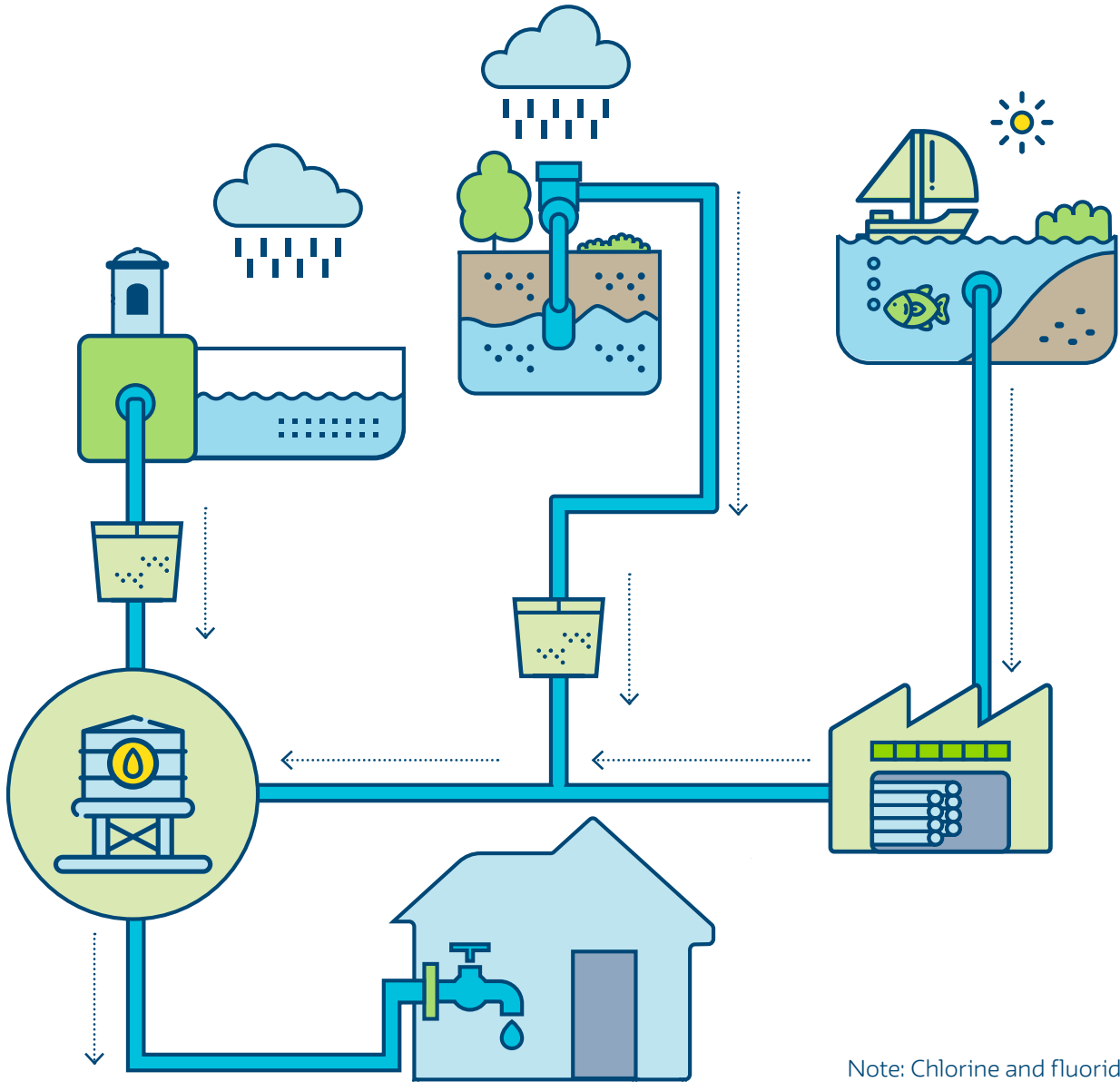


Labelling our water supply



Note: Chlorine and fluoride are added at the treatment plant

Cut out the labels below and place on the water supply diagram above

- | | | | | |
|-----------------|-------------|-----------------|--------|--------------------|
| Groundwater | Dam | Bore | Oceans | Desalination Plant |
| Treatment Plant | Water Tower | Treatment Plant | Home | |