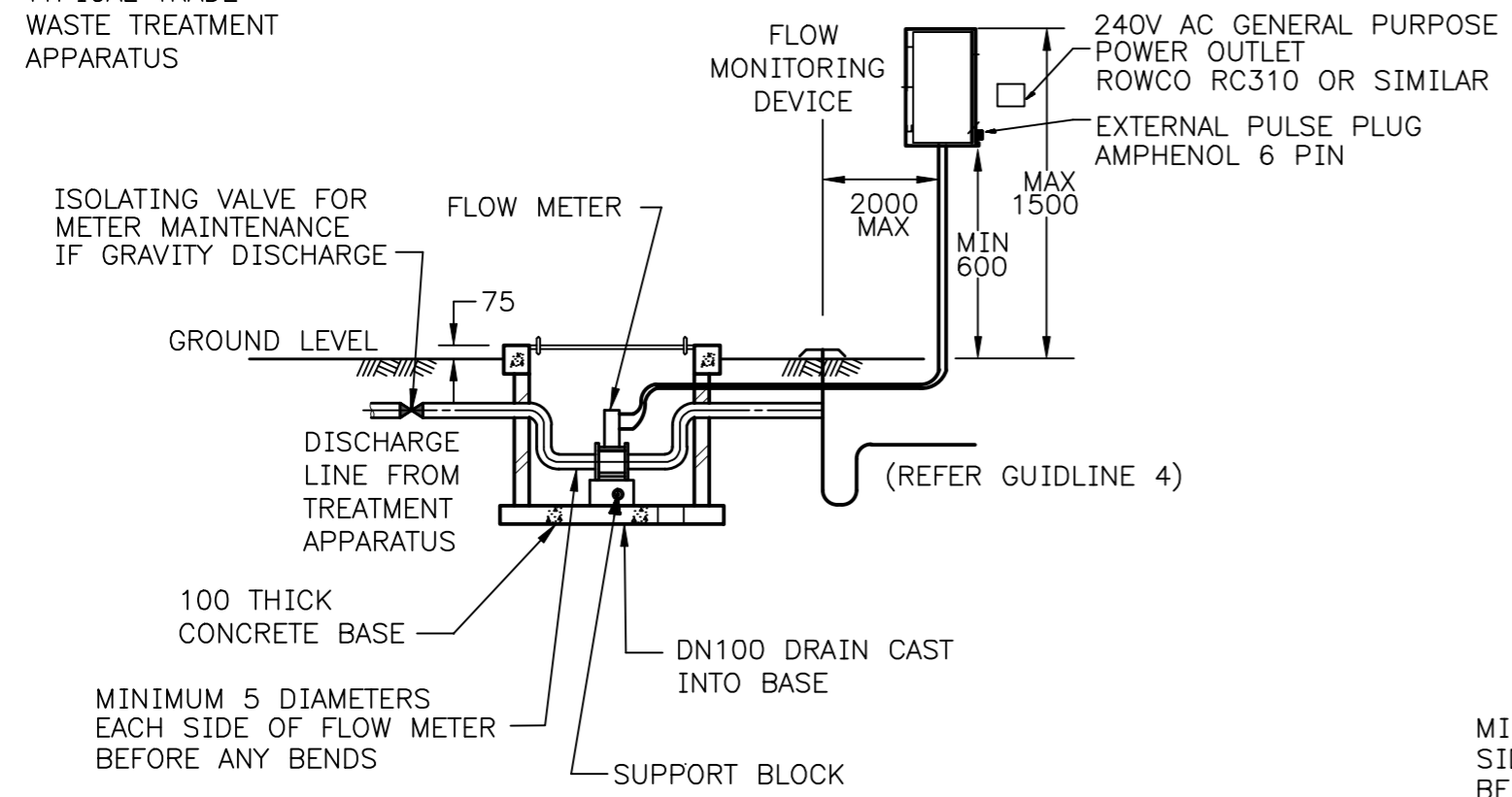
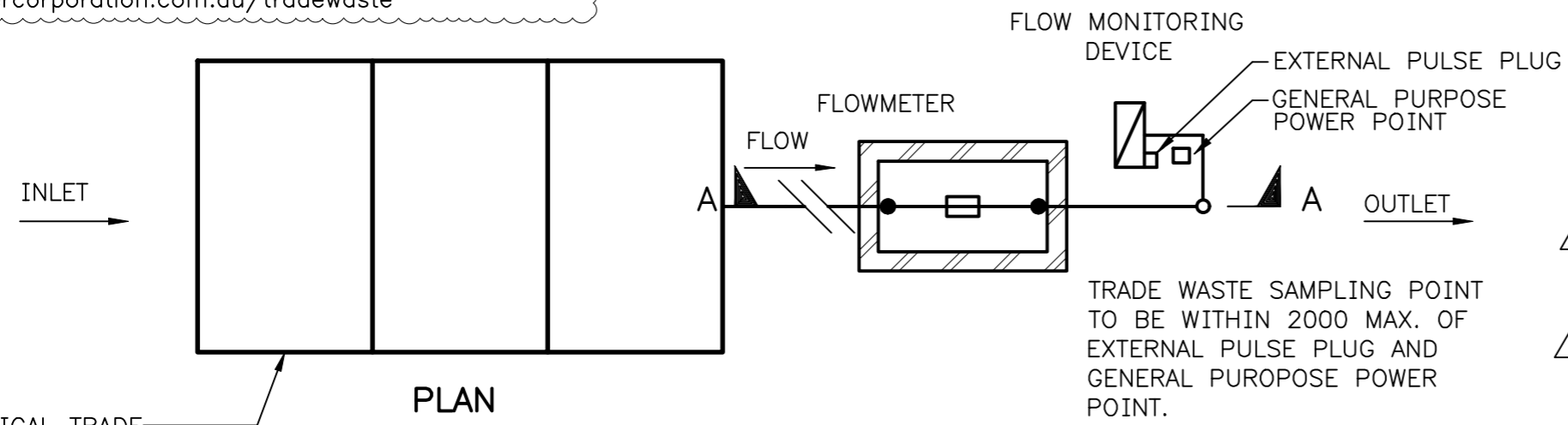


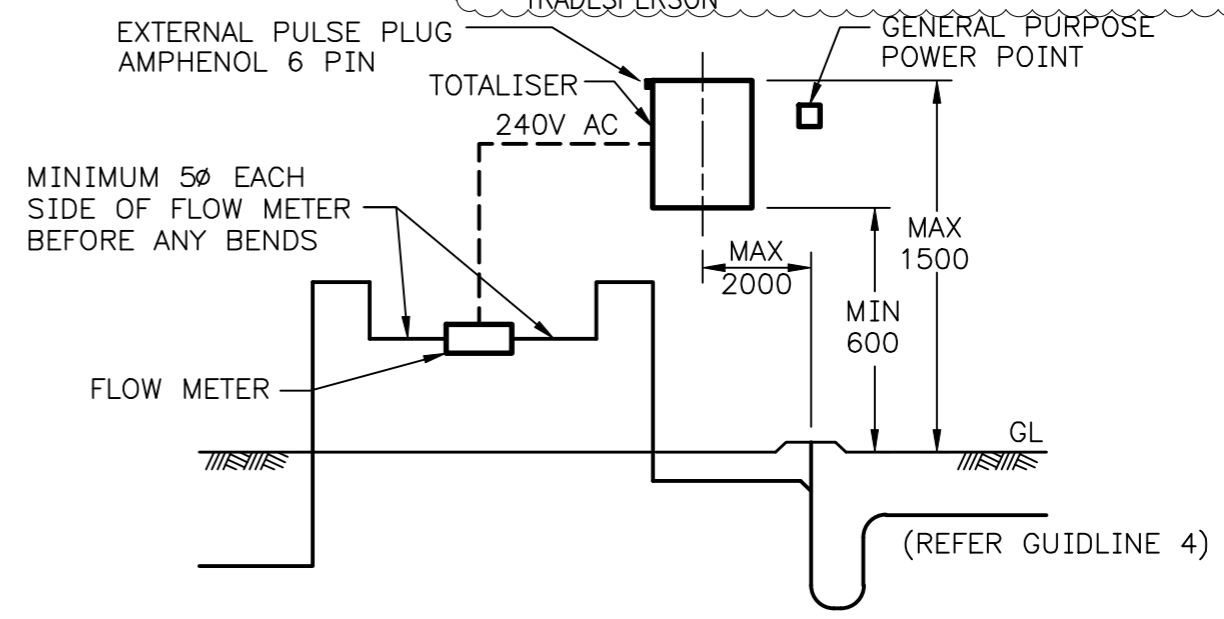
FOR MORE INFORMATION REFER TO OUR WEBSITE
watercorporation.com.au/tradewaste

GUIDELINES

1. PLEASE NOTE THIS DRAWING IS NOT A STAND ALONE DOCUMENT AND MUST BE READ IN CONJUNCTION WITH PUB 9, 11 & 16.
2. TRADE WASTE SAMPLING POINT TO BE WITHIN 2 METRES OF EXTERNAL PULSE PLUG AND GENERAL PURPOSE POWER POINT.
3. UNLESS OTHERWISE APPROVED, ONLY ONE TRADE WASTE SAMPLE POINT TO BE PROVIDED FOR EACH BUSINESS.
4. REFER TO TYPICAL DRAWINGS HX33-11-30 OR HX33-10-10 TRADE WASTE SAMPLE POINTS FOR FURTHER DETAILS.
5. ALL MEASUREMENTS SHOWN ARE IN MILLIMETRES.
6. ALL ASSOCIATED PLUMBING WORK IS TO COMPLY WITH THE PLUMBERS LICENSING AND PLUMBING STANDARDS REGULATIONS 2000 (THE PLUMBING REGULATIONS) (AS AMENDED)
7. A VALID TRADE WASTE MONITORING SYSTEM VERIFICATION REPORT IS REQUIRED TO BE SUBMITTED TO WATER CORPORATION UPON INSTALLATION AND PRIOR TO TRADE WASTE DISCHARGE
8. FLOW METER SHALL BE APPROPRIATELY SIZED FOR THE BUSINESS TRADE WASTE DISCHARGE FLOW RATE AND VOLUME.
9. LOCATION OF THE TRADE WASTE SAMPLING POINT (TWSP):
 - 9.1. TWSP SHALL BE LOCATED IN AN APPROPRIATE LOCATION WITH ADEQUATE SPACE FOR SAMPLING EQUIPMENT.
 - 9.2. TWSP MUST NOT BE LOCATED IN A TRAFFICABLE (PEDESTRIAN OR VEHICLE) AREA OR MUST BE POSITIONED AS DIRECTED BY THE WATER CORPORATION.
 - 9.3. TWSP DESIGN, LOCATION AND ACCESSIBILITY MUST NOT CONSTITUTE A HEALTH AND SAFETY RISK IN THE MONITORING OF ANY TRADE WASTE DISCHARGE
10. IT IS THE BUSINESS OWNERS RESPONSIBILITY TO ENSURE ALL ELECTRICAL WORK IS CERTIFIED BY THE RELEVANT LICENSED TRADESPERSON



SECTION A
BELOW GROUND INSTALLATION



ABOVE GROUND INSTALLATION SCALE: DIAGRAMMATIC

G	05/2024		GUIDELINE 10 ADDED, GUIDELINES 7 AND 9.3 UPDATED	JD	NT	MS
F	02/2020		GUIDELINES AMENDED, COMMENTS UPDATED	JMS	NT	MS
E	10/2016		SAMPLING POINT DETAIL REMOVED, NOTES AMENDED	BJ	SJ	MS
D	07/2016		WEBSITE DETAILS ADDED, GUIDELINES AMENDED	BJ	SJ	MS
C	01/2012		NOTE 2 MODIFIED	BJ	MS	AM
B	06/2009		NOTE 6 ADDED	RY	GC	AM
ISSUE	DATE	GRID	REVISION	DRN	REC	APPD

DES CALC	RECOMMENDED	01/08/2005		WATER CORPORATION TYPICAL DRAWINGS FOR TRADE WASTE TRADE WASTE MONITORING POINT		ORIGINAL SHEET SIZE
DES CHD	A MANZINGER					A3
DRN A CLEAVER	APPROVED			01/08/2005		J HEWITT
Q.C. CHD G CLEAVER	MANAGER, INDUSTRIAL WASTES				FILE 58536712	PLAN
					PROJECT	HX33-20-00
					CAD	ISSUE
					G	MF