

Alkimos marine investigations January 2023 update



Western Australia will need a new major water source in 2028 due to declining rainfall and a growing population. At full capacity, the proposed Alkimos Seawater Desalination Plant (ASDP) will supply 100 billion litres a year of clean, safe drinking water to millions of people.

Intake and outfall pipelines for ASDP will be tunnelled under the sea floor to protect the reef and marine environment. Marine investigations are continuing to inform the location and construction of these tunnels.

What are we doing?

Late last year, Water Corporation's authorised consultants Advisian and its contractor MES undertook investigations off the coast of Alkimos. Our consultants will return to the area to complete a small section of work that they were unable to complete during the previous campaign.

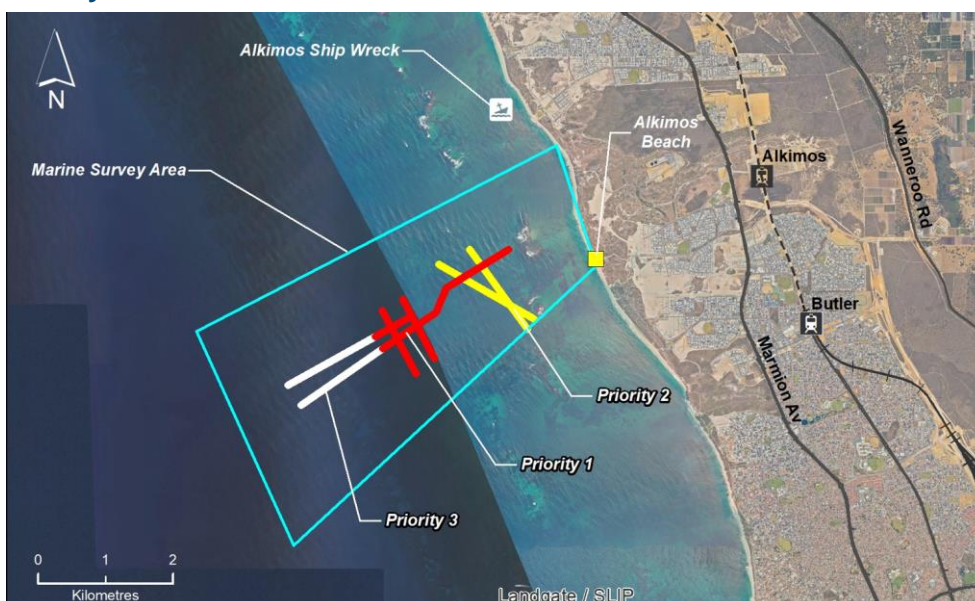
Work will take place for approximately **three days between February 20 and 27, 2023 during daylight hours.**

How will this work impact people?

A 6-metre survey boat will operate within an area as shown in the map below. Mariners can freely enter and exit the area whilst investigations are proceeding, including for line fishing, placing and retrieving lobster pots and other marine activities. Mariners are requested to exercise caution when in proximity to the slow-moving survey boat, which will tow submerged or partially submerged equipment that can extend up to 50 metres behind the vessel and may be difficult to see. This information will be communicated via a Temporary Notice to Mariners.

If divers are spotted within a 500-metre radius of the works, activities will stop until it is safe to proceed. Access to the beach for fishing, recreation and swimming will not be affected by these activities.

Survey area



7 February 2023
updated 13 February 2023
Ref: 147016502 v2



Coordinates

Location	Longitude	Latitude	Easting	Northing
NE (beach)	115° 39.650' E	31° 36.670' S	372968mE	6501887mN
SE (beach)	115° 40.000' E	31° 37.640' S	373549mE	6500102mN
NW	115° 36.250' E	31° 38.120' S	367629mE	6499130mN
SW	115° 37.050' E	31° 39.700' S	368941mE	6496254mN

Survey activities

The survey activities will include:

1. **Exploration** – daily reconnaissance of the area to ensure survey activities will avoid underwater obstacles, including lobster pots.
2. **Geophysical survey** – equipment will be towed behind the survey boat and will float above the seafloor. The equipment will collect data from the seabed and subsurface geology through releasing pulses or sound waves. Like an ultrasound, the pulses, which will be at a low, controlled frequency, are reflected by rock formations or other underground structures and are recorded for analysis.

During the previous geophysical survey undertaken at the same low, controlled frequency, an experiment was carried out on lobsters. The experiment showed that there was not any immediate observable impact to lobsters from the survey.

Why do you need to undertake these activities now?

The timing of these activities has been determined by the availability of the survey boat and specialised equipment. We have planned our activities to accommodate lobster fishing.

Future marine activities

Additional geotechnical investigations are planned for March 2023 using a much larger vessel. Further information will be provided.

Who do I contact for more information?

Please contact Community Engagement at Water Corporation on 9420 2231 or Community.Engagement@watercorporation.com.au

For general project information please refer to www.watercorporation.com.au/newdesal

To report a fault, emergency, or security issue, please phone

– 13 13 75 (24 Hours)