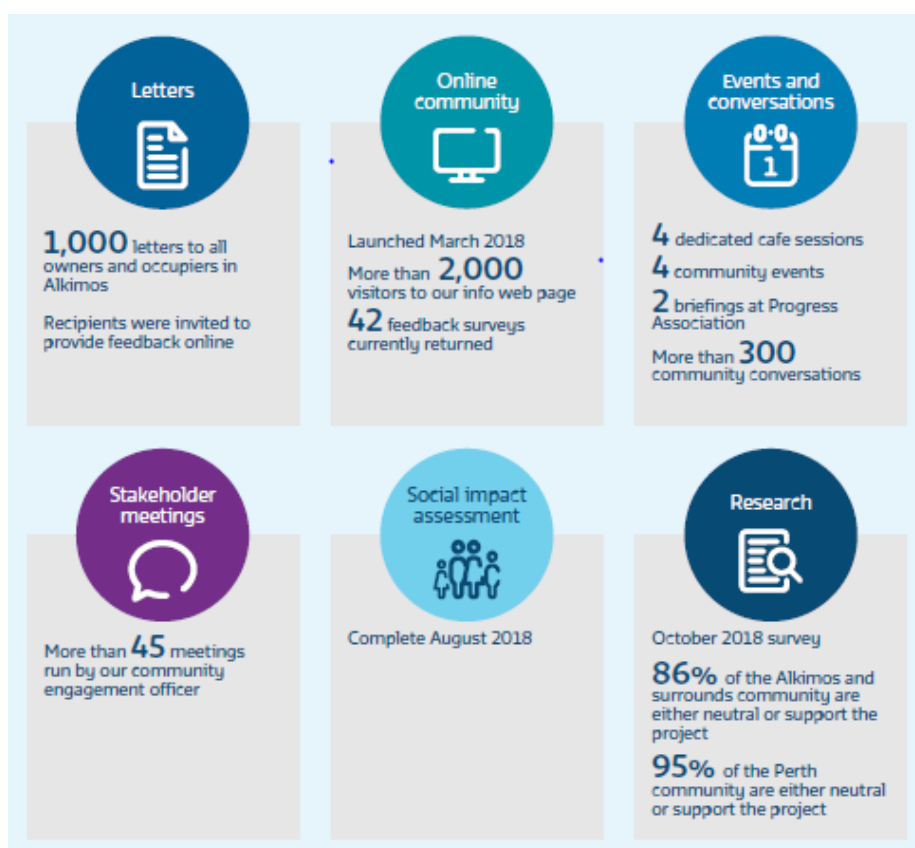


Conversations with community – Alkimos desalination investigations

An important part of the feasibility investigations for the Alkimos Seawater Desalination Plant was sharing our plans with, and inviting feedback from, stakeholders and community. We are thankful to the hundreds of people that attended community events, visited the online community or contacted us.

How did we collect feedback?

We invited you to learn about the work and provide feedback through our online community, which has attracted more than 2,000 visitors. We also sent hundreds of letters to Alkimos Beach residents, featured in State and local media, placed advertising, joined the City of Wanneroo, Lendlease and Metronet at community events, hosted four local café sessions and visited community groups to provide briefings and updates.



Working with stakeholders

We have continued to provide information to, and seek guidance from, local stakeholders including:

- City of Wanneroo
- Alkimos Beach Progress Association
- Lendlease
- Landcorp
- Recfishwest
- Western Rock Lobster Council
- Main Roads WA
- Department of Transport
- WA Fishing Industry Council
- Alkimos Beach Surf Lifesaving Club
- Metronet

January 2019

Conversations with community – Alkimos desalination investigations

What you told us

We heard you were interested in:

What the plant might look
and sound like

Environmental impacts

Beach access and marine
management

Job opportunities

Impact on property prices

How we used your feedback

Completed a noise study

Sunk the plant behind dunes
so it is hidden from view

Chose to tunnel our marine
pipelines under the beach
and ocean bed

Completed a Social Impact
Assessment

Stay informed

We will continue to keep the community and stakeholders updated as we progress our planning, including when a decision on a new water source is made. No firm timing is known on this decision or which option will be nominated.

Visit watercorporation.com.au/securingwater to read more about our long term plans for Perth's water supply.