

Alkimos marine investigations



Western Australia will need a new major water source in 2028 due to declining rainfall and a growing population. At full capacity, the proposed Alkimos Seawater Desalination Plant will supply 100 billion litres a year of clean, safe drinking water to millions of people. The Environmental Protection Authority is assessing a detailed Environmental Review Document that outlines our proposal. At the same time, Water Corporation is progressing plans to ensure that the Alkimos Seawater Desalination Plant is delivered on time. As part of the planning phase of this project, we will complete geophysical investigations off the coast of Alkimos.

What?

Water Corporation's authorised consultants Advisian and its contractor MES will undertake investigations off the coast of Alkimos. The information is critical to inform the location and construction of the intake and outfall pipelines for the proposed desalination plant. The pipelines will be tunnelled under the sea floor to protect the reef and marine environment.

When?

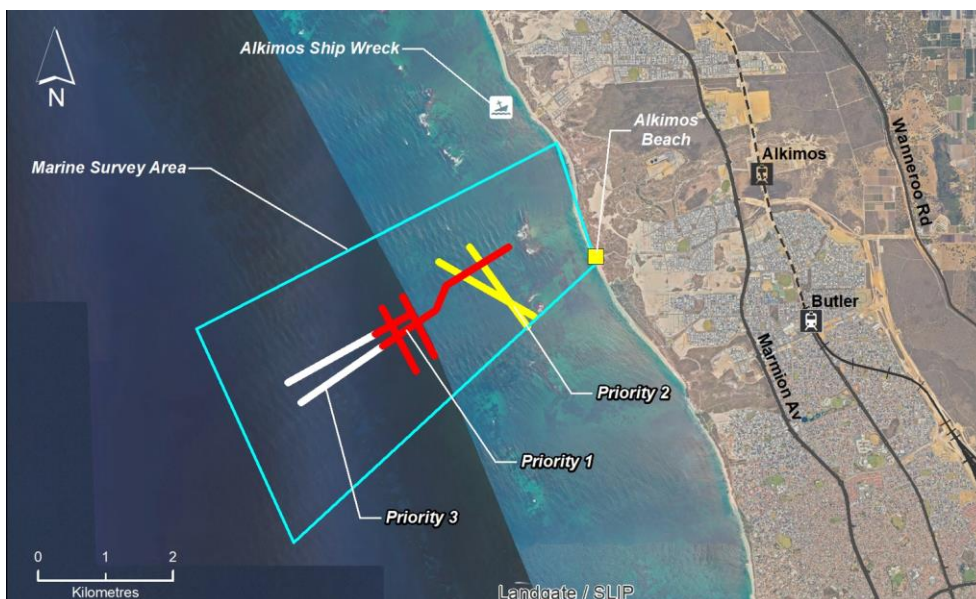
Work will start from **21 November 2022**. It will continue for approximately **one week** (weather permitting) and will be conducted during daylight hours.

How will this work impact the community?

A 6.1-metre survey boat will operate within an area as shown in the map below. Fishers can freely enter and exit the area to place and remove lobster pots whilst work is proceeding. Fishers are requested to exercise caution when in proximity to the slow-moving survey boat, which will display a black diamond flag when towing equipment. This information will be communicated via a Temporary Notice to Mariners.

If divers are spotted within a 500-metre radius of the works, activities will stop until it is safe to proceed. Access to the beach for fishing, recreation and swimming will not be affected by these activities.

Survey area





Coordinates

Location	Longitude	Latitude	Easting	Northing
NE (beach)	115° 39.650' E	31° 36.670' S	372968mE	6501887mN
SE (beach)	115° 40.000' E	31° 37.640' S	373549mE	6500102mN
NW	115° 36.250' E	31° 38.120' S	367629mE	6499130mN
SW	115° 37.050' E	31° 39.700' S	368941mE	6496254mN

Survey activities

The survey activities will include:

1. **Exploration** – daily reconnaissance of the area to ensure survey activities will avoid underwater obstacles, including lobster pots.
2. **Bathymetry** – mapping of the seafloor to measure the depth of the ocean and rock formation locations for comparison with charts for the area.
3. **Geophysical survey** – equipment will be towed behind the survey boat and will float above the seafloor. The equipment will collect data from the seabed and subsurface geology through releasing pulses or sound waves. Like an ultrasound, the pulses, which will be at a low, controlled frequency, are reflected by rock formations or other underground structures and are recorded for analysis.

Protecting the marine environment

A comprehensive environmental management plan (EMP) has been prepared to mitigate potential impacts on the marine environment.

Why do you need to undertake these activities now?

The timing of these activities has been determined by the availability of the survey boat and specialised equipment. We have planned our activities to accommodate lobster fishing.

Future marine activities

Additional geotechnical investigations are planned for early 2023 using a much larger vessel. The bathymetry mapping will be used for this larger vessel. Further information will be provided on this work in December.

Who do I contact for more information?

Please contact Community Engagement at Water Corporation on 9420 2231 or Community.Engagement@watercorporation.com.au

For general project information please refer to www.watercorporation.com.au/newdesal

To report a fault, emergency, or security issue, please phone

– 13 13 75 (24 Hours)