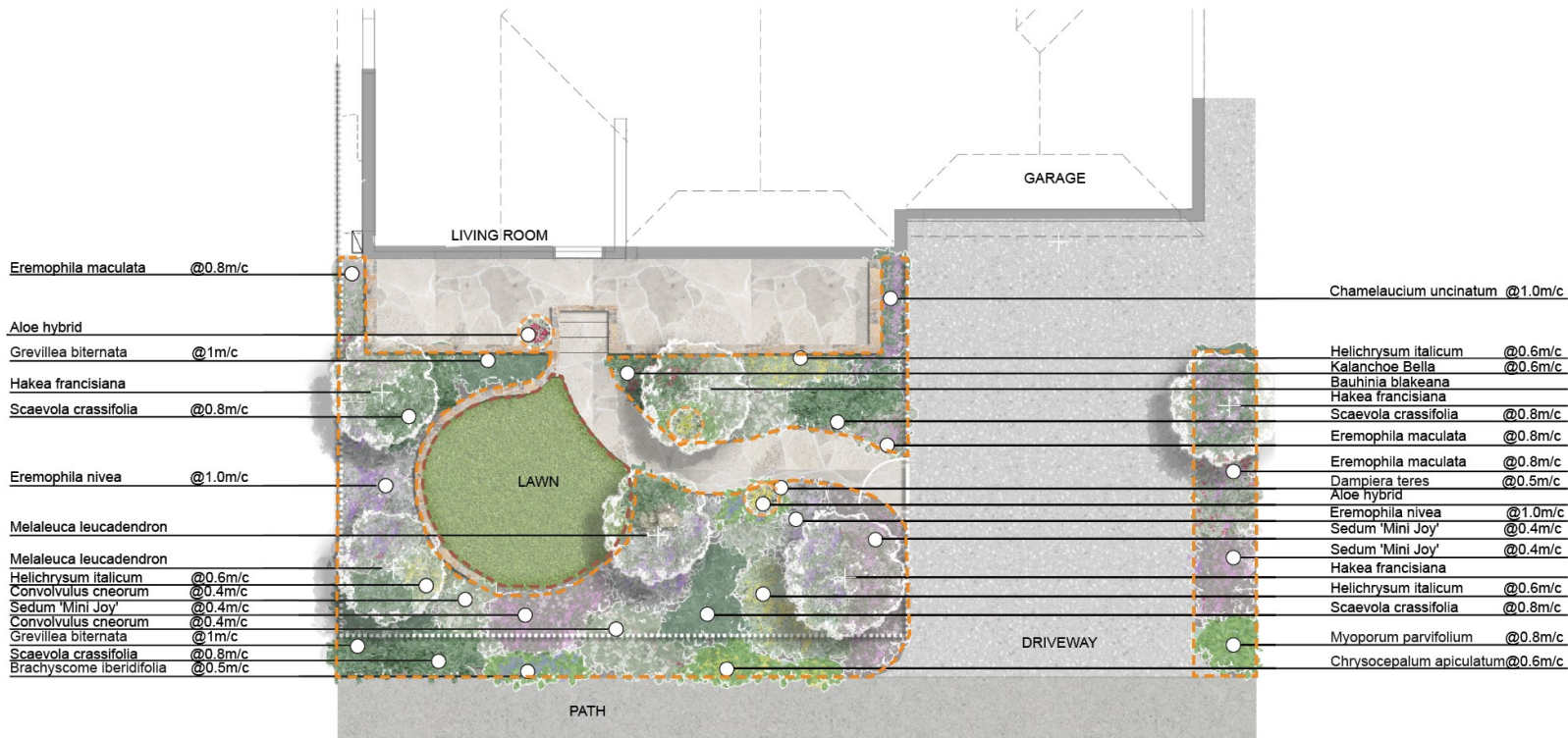


Mid West Cottage Garden Design

HYDROZONE PRIMARY --
 Daily
 HYDROZONE SECONDARY --
 2 days / week
 HYDROZONE MINIMAL --
 By hand, as needed



Note: m/c refers to the planting density ie 0.6m/c - leave 0.6 metre space between the centre stem of each of plant

Mid West Cottage Garden Design

| Supplies | Plant Directory | | |
|---|------------------------------------|-----------------------|-------------------------|
| Likely soil type: Sandy soil and gravels Soil amendments: Organic compost, bentonite clay for sandy soil, soil wetting agent | <i>Botanical name</i> | <i>Common name</i> | <i>Planting density</i> |
| <i>Supplies you'll need to create this garden design</i> | <i>Trees</i> | | |
| Seeds/plants | Hakea francisiana | Emu Tree | |
| Stakes | Melaleuca leucadendron | Weeping Paperbark | |
| Organic Waterwise mulch 50-100mm thick | Bauhinia blakeana | Hong Kong Orchid Tree | |
| Turf | <i>Strappy</i> | | |
| Edging to delineate turf and garden beds | Aloe hybrid | Aloe | n/a |
| Feature pot | <i>High shrubs/Hedges</i> | | |
| Bluestone stepping stones | Chamelaucium uncinatum | Geraldton Wax | 1m/c |
| Slow-release fertiliser suitable for natives | Eremophila nivea | Silky Eremophila | 1m/c |
| | Grevillea biternata | Grevillea | 1m/c |
| | <i>Medium shrubs</i> | | |
| | Eremophila maculata 'Pink Passion' | Emu Bush | 0.8m/c |

Mid West Cottage Garden Design

| | | | |
|--|---------------------------|-------------------------|--------|
| | Scaevola crassifolia | Thick-leaved Fan Flower | 0.8m/c |
| | Helichrysum italicum | Curry Plant | 0.6m/c |
| | Convolvulus cneorum | Silver Bush | 0.4m/c |
| | Sedum 'Mini Joy' | Stonecrop | 0.4m/c |
| | Kalanchoe 'Bella' | Kalanchoe | 0.6m/c |
| | <i>Groundcovers</i> | | |
| | Dampiera teres | Terete-leaved Dampiera | 0.5m/c |
| | Chrysocephalum apiculatum | Yellow Buttons | 0.6m/c |
| | Myoporum parvifolium | Creeping boobialla | 0.8m/c |
| | Brachyscome iberidifolia | Swan River Daisy | 0.5m/c |