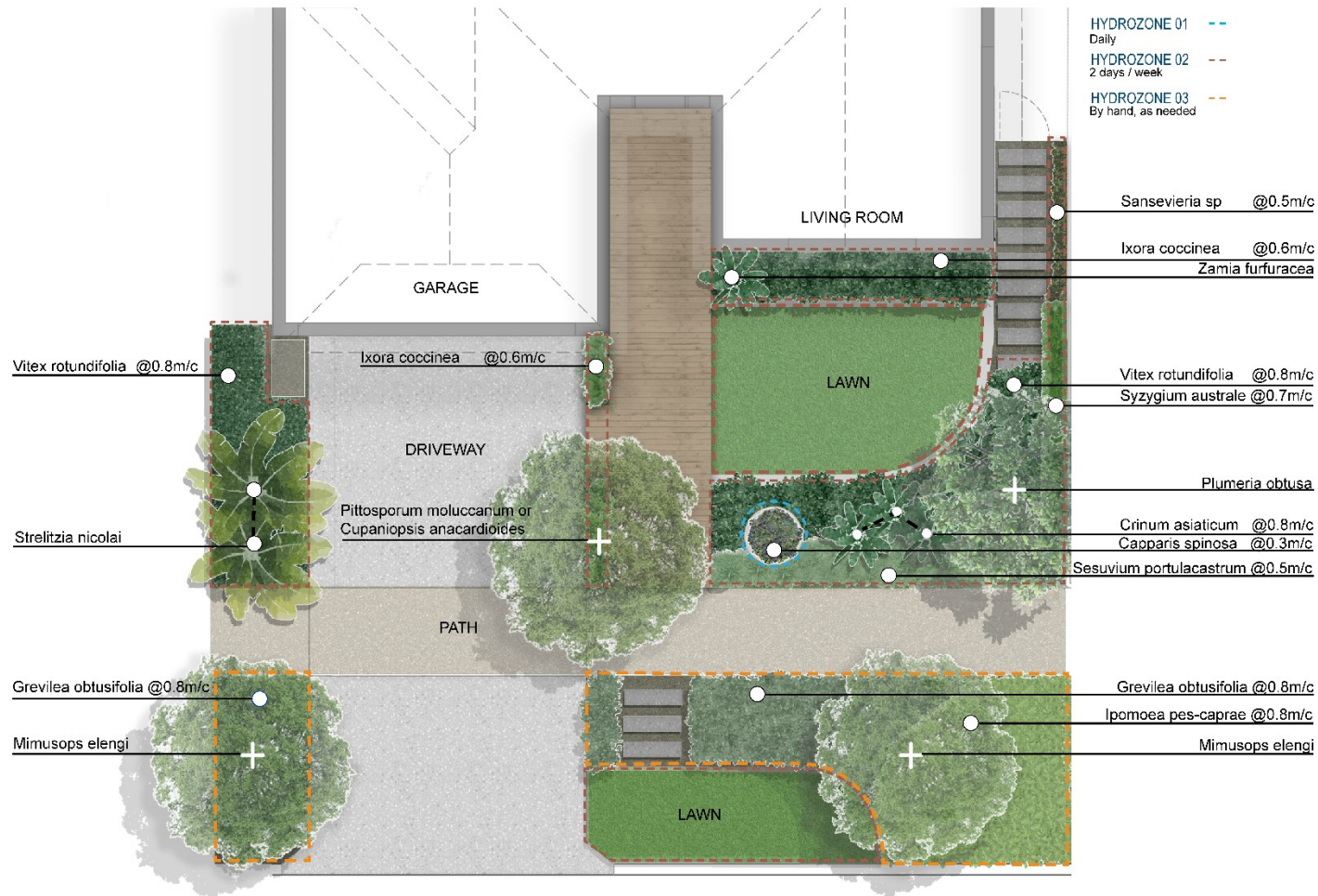


North West Tropical Garden Design



Note: m/c refers to the planting density ie 0.6m/c - leave 0.6 metre space between the centre stem of each of plant

North West Tropical Garden Design

Supplies	Plant Directory		
Likely soil type: Sandy soil Soil amendments: Bentonite clay, organic compost or soil wetting agent	<i>Botanical name</i>	<i>Common name</i>	<i>Planting density</i>
<i>Supplies you'll need to create this garden design</i>	Trees		
Seeds/plants	Cupaniopsis anacardioides	Tuckaroo	
Stakes	Mimusops elengi	Medlar	
Organic Waterwise mulch 50-100mm thick	Pittosporum moluccanum	Cheesewoods	
Feature pot	Plumeria obtusa	Frangipani	0.8m/c
Turf	Accent plants		
Edging to delineate turf and garden beds	Crinum asiaticum	Spider Lily	0.8m/c
Stepping stones	Strelitzia nicolai	Giant Bird of Paradise	As shown
Slow-release fertiliser	Zamia furfuracea	Cardboard Palm	As shown
	Screening shrubs/Hedges		
	Syzygium australe	Bush Cherry	0.8m/c
	Medium shrubs		
	Capparis spinosa	Caper Bush	0.3m/c

North West Tropical Garden Design

	Ixora coccinea	Flame of the Woods	0.6m/c
	Sansevieria sp	Snake plant	0.5m/c
	<i>Groundcovers</i>		
	Grevillea obtusifolia	Grevillea or Spider Flower	0.8m/c
	Ipomoea pes-caprae	Beach Morning Glory	0.8m/c
	Sesuvium portulacastrum	Sea Purslane	0.5m/c
	Vitex rotundifolia	Beach Vitex	0.8m/c