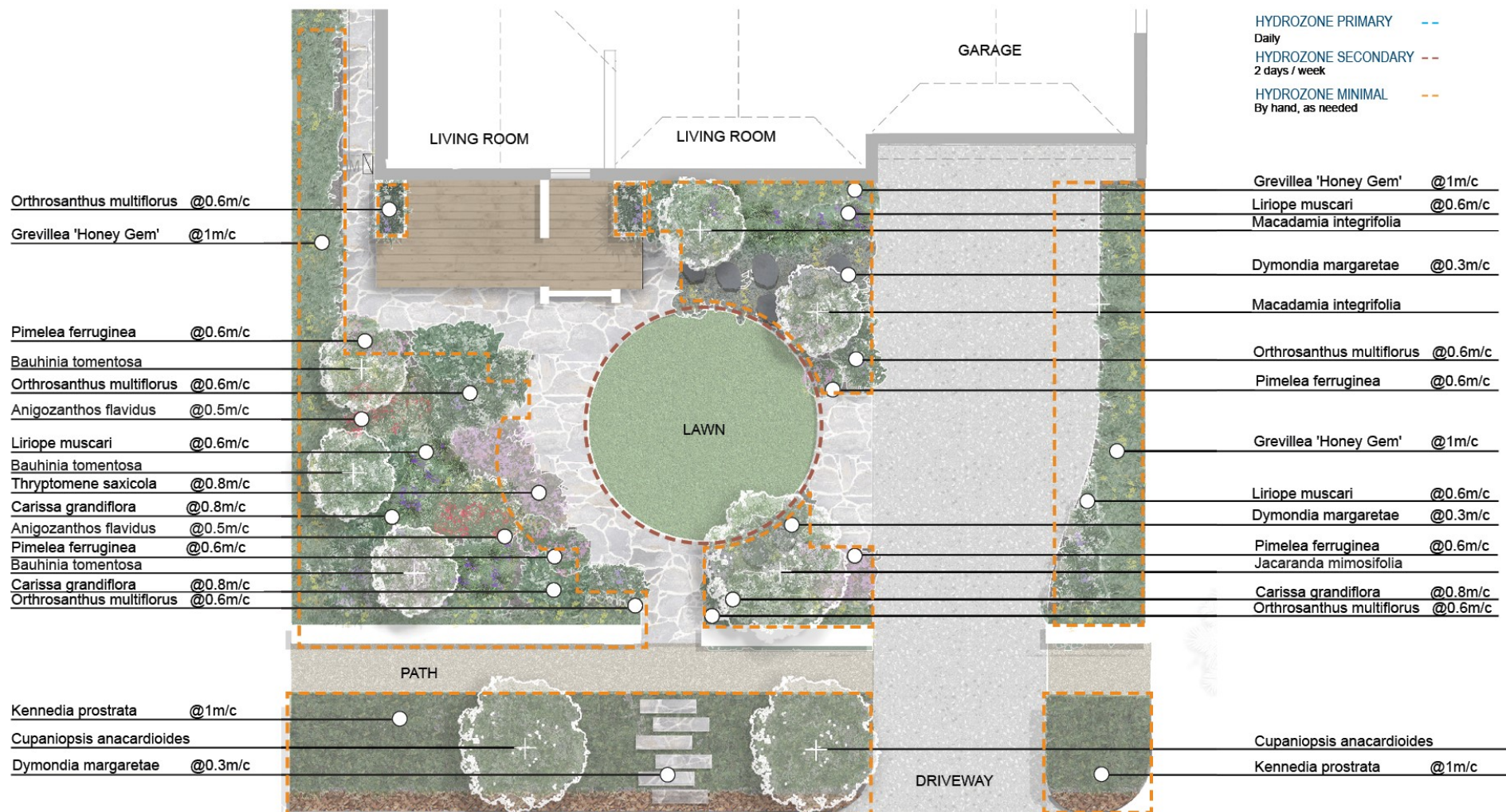


# Perth & South West Cottage Garden Design



**Note:** m/c refers to the planting density ie 0.6m/c - leave 0.6 metre space between the centre stem of each of plant

## Perth & South West Cottage Garden Design

SUPPLIES	PLANT DIRECTORY		
<p><i>Likely soil type:</i> Sandy soil and gravels</p> <p><i>Soil amendments:</i></p> <ul style="list-style-type: none"> <li>Organic compost</li> <li>Bentonite clay for sandy soil</li> <li>Soil wetting agent</li> </ul> <p><i>Supplies you'll need to create this garden design:</i></p> <ul style="list-style-type: none"> <li>Seeds/plants</li> <li>Stakes</li> <li>Organic Waterwise mulch</li> <li>Turf</li> <li>Edging to delineate turf and garden beds</li> <li>Feature pot</li> <li>Bluestone stepping stones</li> <li>Slow-release fertiliser suitable natives</li> </ul>	<i>Botanical name</i>	<i>Common name</i>	<i>Planting density</i>
	<b>Trees</b>		
	Macadamia tree	Macadamia	
	Cupaniopsis anacardioides	Tuckaroo	
	Bauhinia tomentosa	Yellow Bauhinia	
	Jacaranda mimosifolia	Jacaranda	1m/c
	<b>High shrubs/Hedges</b>		
	Grevillea 'Honey Gem'	Grevillea	1m/c
	<b>Medium shrubs</b>		
	Anigozanthos flavidus	Kangaroo Paw	0.5 m/c
	Carissa Desert Star	Natal Plum	0.8 m/c
	Hypocalymma angustifolium (Endl.) Schauer	White Myrtle	0.8 m/c
	Pimelea ferruginea Labill.	Pink Rice Flower	0.6 m/c
	Thryptomene saxicola	Rock Thryptomene	0.8 m/c
	Liriope muscari	Lily Turf	0.8 m/c
	Orthrosanthus multiflorus	Morning Flag	0.6 m/c
	<b>Groundcovers</b>		

## Perth & South West Cottage Garden Design

	Threlkeldia diffusa R.Br.	Coast Bonefruit	1m/c
	Dymondia margaretae	Treasure Flower	0.3m/c
	Kennedia prostrata	Running Postman	1m/c