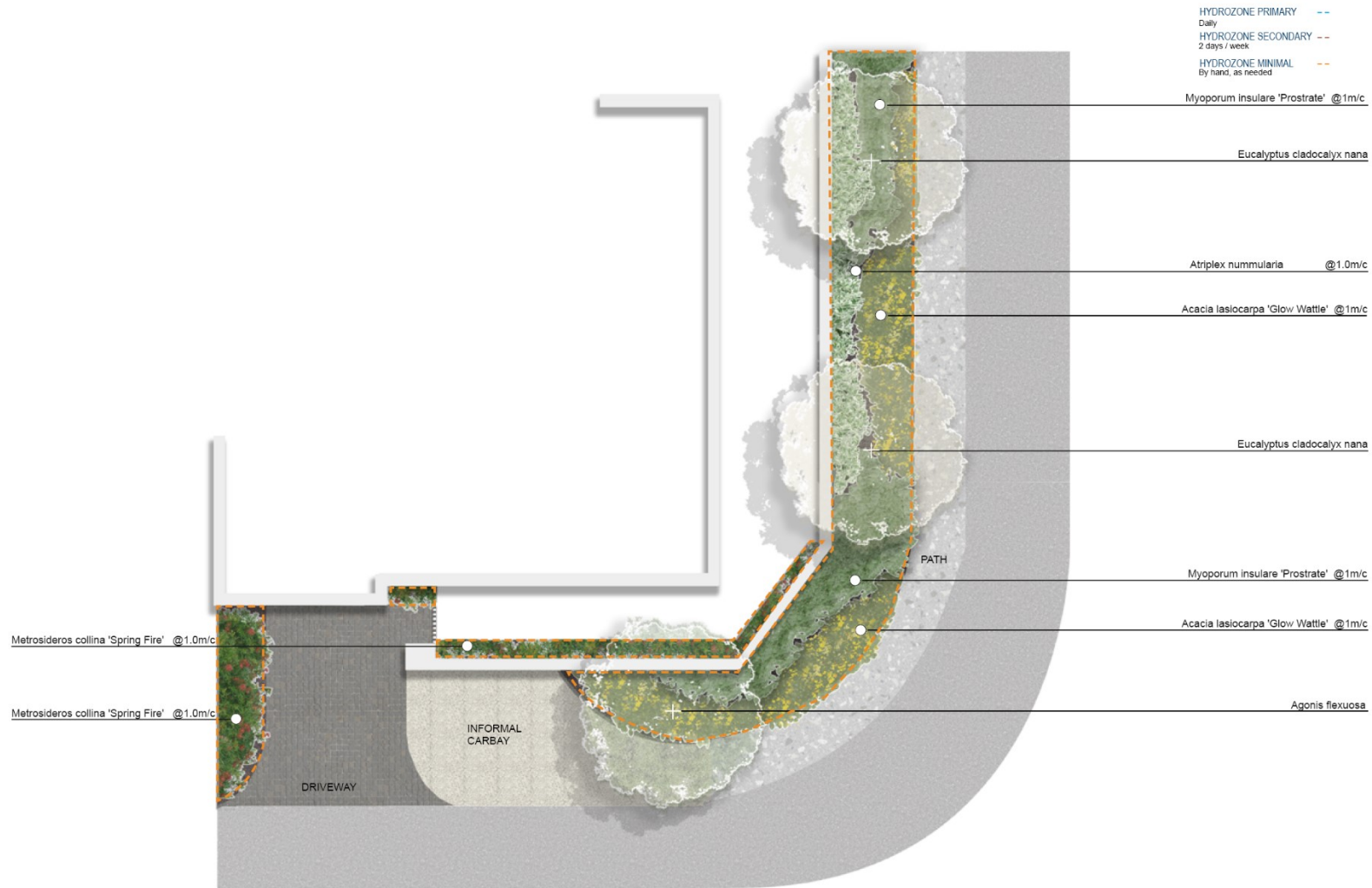


Coastal Verge Design



Coastal Verge Design

Note: m/c refers to the planting density ie 0.6m/c - leave 0.6 metre space between the centre stem of each of plant

Supplies	Plant Directory		
Likely soil type: Sandy soil Soil amendments: Bentonite clay, organic compost or soil wetting agent	<i>Botanical name</i>	<i>Common name</i>	<i>Planting density</i>
<i>Supplies you'll need to create this garden design</i>	Trees		
Seeds/plants	Eucalyptus cladocalyx nana	Dwarf Sugar Gum	
Stakes	Agonis flexuosa	West Australian Weeping Peppermint	
Organic Waterwise mulch 50-100mm thick	High shrubs/Hedges		
Summerstone fines 75-100mm compacted	Metrosideros collina 'Spring Fire'	NZ Christmas Bush	1m/c
Edging between compacted fines and garden beds	Atriplex nummularia	Old Man Saltbush	1m/c
Slow-release fertiliser suitable for natives	Groundcovers		
	Myoporum insulare (prostrate from)	Ground Cover Boobiella	1m/c

Coastal Verge Design

	Acacia lasiocarpa 'Glow Wattle' (prostrate form)	Glow Wattle	1m/c
--	--	-------------	------