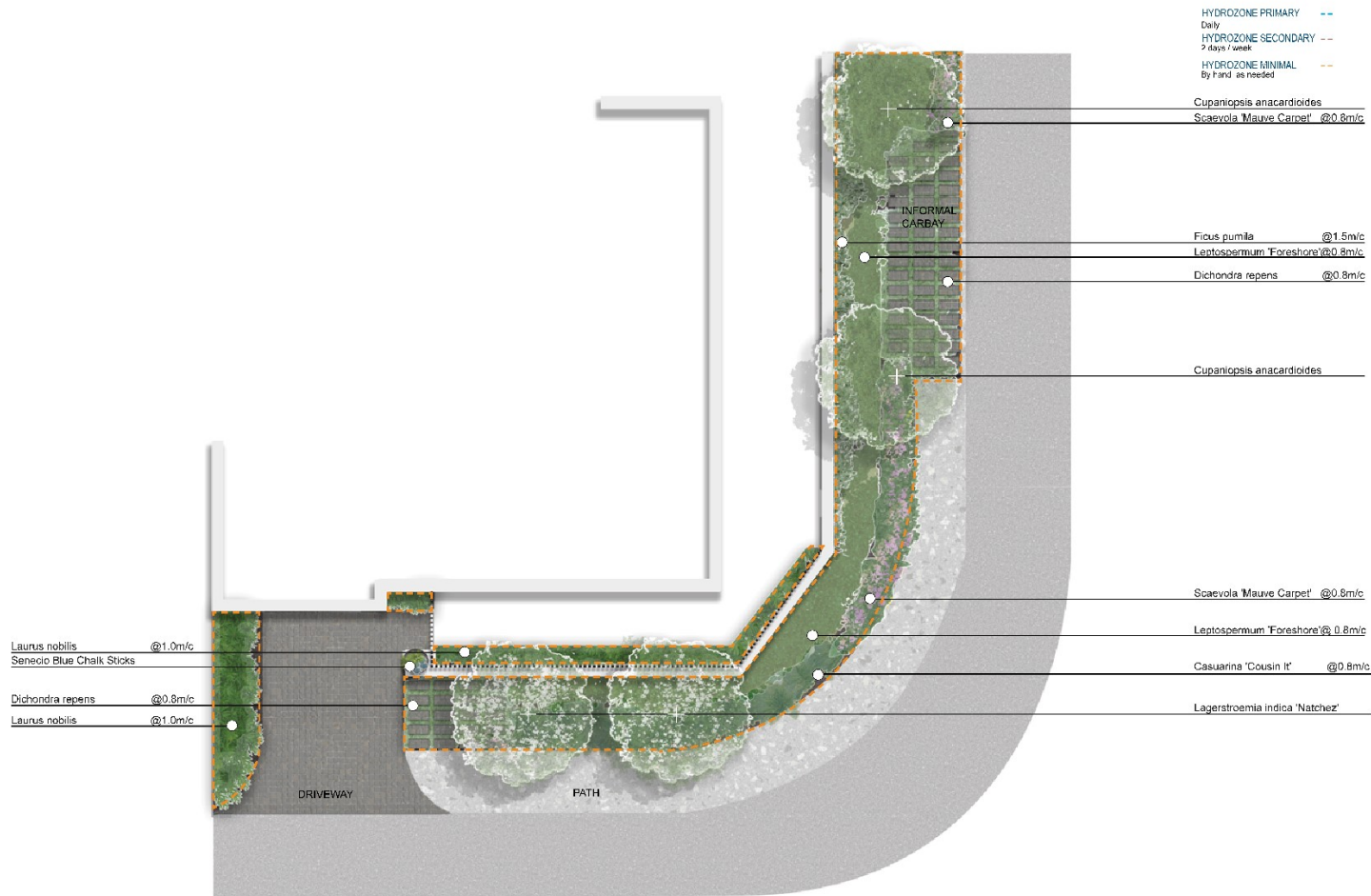


Contemporary Verge Design



Note: m/c refers to the planting density ie 0.6m/c - leave 0.6 metre space between the centre stem of each of plant

Contemporary Verge Design

| Supplies | Plant Directory | | |
|--|---|--------------------|-------------------------|
| Likely soil type: Sandy soil Soil amendments: Bentonite clay, organic compost or soil wetting agent | <i>Botanical name</i> | <i>Common name</i> | <i>Planting density</i> |
| <i>Supplies you'll need to create this garden design</i> | <i>Trees</i> | | |
| Seeds/plants | Lagerstroemia indica 'Natchez' | Crepe Myrtle | |
| Stakes | Cupaniopsis anacardioides | Tuckeroo | |
| Organic Waterwise mulch 50-100mm thick | <i>Climber</i> | | |
| Feature pot | Ficus pumila | Creeping Fig | 1.5m/c |
| Slow-release fertiliser suitable for natives | <i>High shrubs/Hedges</i> | | |
| | Laurus nobilis | Bay Tree | 1.0m/c |
| | <i>Medium shrubs</i> | | |
| | Leptospermum laevigatum 'Foreshore' | Coastal Tea Tree | 0.8m/c |
| | <i>Groundcovers</i> | | |
| | Curio repens/Senecio Blue Chalk Sticks | Blue Chalk Sticks | In pot |

Contemporary Verge Design

| | | | |
|--|--------------------------------|---------------------|--------|
| | Casuarina glauca 'Cousin It' | Prostrate Swamp Oak | 0.8m/c |
| | Scaevola albida 'Mauve Carpet' | Fan-flower | 0.8m/c |
| | Dichondra repens | Kidney Plant | 0.8m/c |